

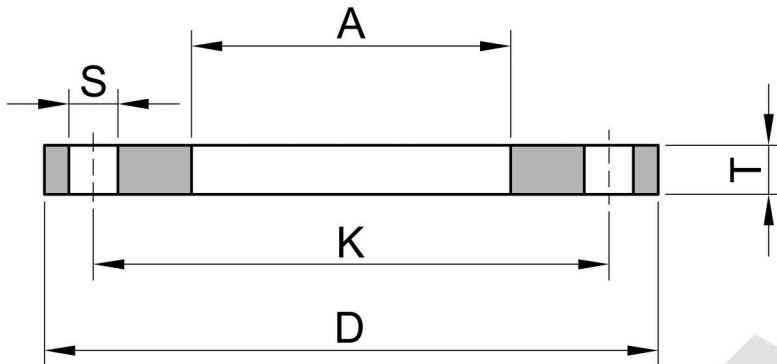
# BACKING RING FOR POLYETHYLENE FLANGES

- **PN 10-16**  
- DN 32-600
- **Class 150-300**  
- DN 20-1400





## Backing Rings for Polyethylene Flanges PN 10

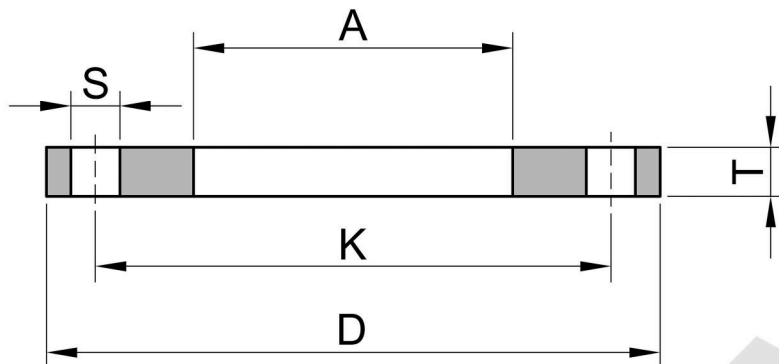


Unit:mm

DN	Pipe Outside	K	D	A	T	S	Number of bolt (Qty)	Bolt Size
32	40	100	140	51	12	18	4	M16
40	50	110	150	62	12	18	4	M16
50	63	125	165	78	12	18	4	M16
65	75	145	185	92	12	18	4	M16
80	90	160	200	108	14	18	8	M16
100	110	180	220	128	14	18	8	M16
100	125	180	220	135	14	18	8	M16
125	125	210	250	135	14	18	8	M16
150	160	240	285	178	14	22	8	M20
150	180	240	285	188	14	22	8	M20
200	200	295	340	235	16	22	8	M20
200	225	295	340	235	16	22	8	M20
250	250	350	395	288	20	22	12	M20
250	280	350	395	294	20	22	12	M20
300	315	400	445	338	24	22	12	M20
350	355	460	505	376	26	22	16	M20
400	400	515	565	430	28	26	16	M24
500	450	620	670	517	32	26	20	M24
500	500	620	670	533	32	26	20	M24
600	560	725	780	618	36	30	20	M27
600	630	725	780	645	36	30	20	M27



## Backing Rings for Polyethylene Flanges PN 16

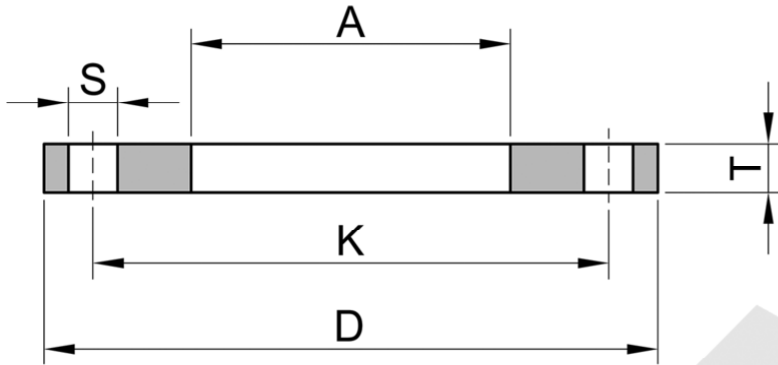


Unit:mm

DN	Pipe Outside	K	D	A	T	S	Number of bolt (Qty)	Bolt Size
32	40	100	140	51	16	18	4	M16
40	50	110	150	62	16	18	4	M16
50	63	125	165	78	16	18	4	M16
65	75	145	185	92	16	18	4	M16
80	90	160	200	108	18	18	8	M16
100	110	180	220	128	18	18	8	M16
100	125	180	220	135	18	18	8	M16
125	125	210	250	135	18	18	8	M16
150	160	240	285	178	18	22	8	M20
150	180	240	285	188	18	22	8	M20
200	200	295	340	235	20	22	12	M20
200	225	295	340	235	20	22	12	M20
250	250	355	405	288	22	26	12	M24
250	280	355	405	294	22	26	12	M24
300	315	410	460	338	26	26	12	M24
350	355	470	520	376	28	26	16	M24
400	400	525	580	430	32	30	16	M27
500	450	650	715	517	38	30	20	M30
500	500	650	715	533	38	32	20	M30
600	560	770	840	618	44	35	20	M33
600	630	770	840	645	44	35	20	M33



## Backing Rings for Polyethylene Flanges Class 150

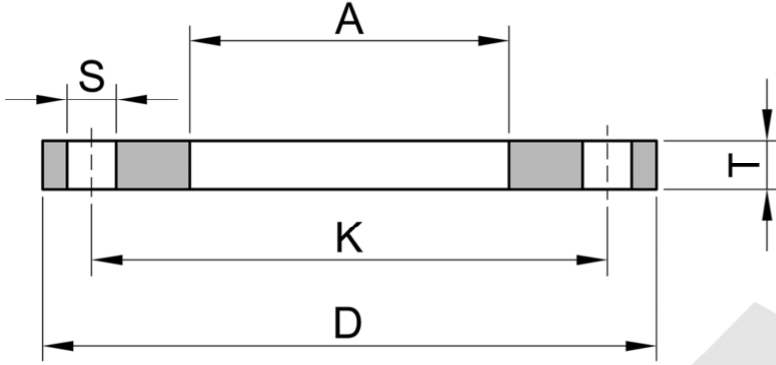


Unit:mm

Pipe OD	K	D	A	T	S	Number of bolt (Qty)	Bolt Size
20	60.5	90	32	6	16	4	1/2"
25	70	98	37	8	16	4	1/2"
32	79.5	108	44	8	16	4	1/2"
40	89	117	52	8	16	4	1/2"
50	98.5	127	62	10	16	4	1/2"
63	120.5	152	78	10	20	4	5/8"
75	139.5	178	92	10	20	4	5/8"
90	152	191	108	12	20	4	5/8"
110	190.5	229	128	12	20	8	5/8"
125	216	254	140	16	23	8	3/4"
140	216	254	158	16	23	8	3/4"
160	241	279	178	16	23	8	3/4"
180	241	279	195	16	23	8	3/4"
200	298.5	343	235	20	23	8	3/4"
225	298.5	343	240	20	23	8	3/4"



## Backing Rings for Polyethylene Flanges Class 150



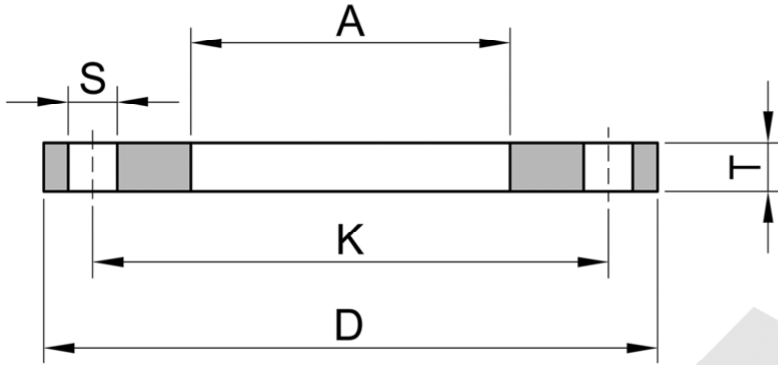
Unit:mm

Pipe OD	K	D	A	T	S	Number of bolt (Qty)	Bolt Size
250	362	406	290	20	26	12	7/8"
280	362	406	300	20	26	12	7/8"
315	432	483	345	25	26	12	7/8"
355	476	535	376	28	29	12	1"
400	540	600	430	32	29	16	1"
450	578	635	480	36	32	16	1 1/8"
500	635	700	533	40	32	20	1 1/8"
560	692	750	590	46	35	20	1 1/4"
630	749	813	660	50	35	20	1 1/4"
710	863.5	927	745	71	35	28	1 1/4"
800	978	1060	835	81	41	28	1 1/2"
900	1085.8	1170	950	90	41	32	1 1/2"
1000	1200.2	1290	1030	90	41	36	1 1/2"
1200	1422.5	1510	1235	108	41	44	1 1/2"
1400	1651	1745	1460	125	48	48	1 3/4"





## Backing Rings for Polyethylene Flanges Class 300



Unit:mm

Pipe OD	K	D	A	T	S	Number of bolt (Qty)	Bolt Size
63	127	165.2	78	22.3	19	8	5/8"
75	149.2	190.6	92	25.5	22.2	8	3/4"
90	168.2	209.6	108	28.6	22.2	8	3/4"
110	200	254.1	128	31.8	22.2	8	3/4"
160	269.8	317.6	178	36.5	22.2	12	3/4"
200	330.2	381.1	235	41.3	25.4	12	7/8"
250	387.3	444.6	290	47.7	28.5	16	1"
315	450.8	520.8	345	50.9	31.7	16	1 1/8"
355	514.3	584.3	376	54	31.7	20	1 1/8"
400	571.5	647.8	430	57.2	34.9	20	1 1/4"
450	628.6	711.3	480	60.4	34.9	24	1 1/4"
500	685.8	774.8	533	63.6	34.9	24	1 1/4"
560	685.8	774.8	590	63.6	34.9	24	1 1/4"
630	812.8	914.5	660	69.9	41.2	24	1 1/2"